

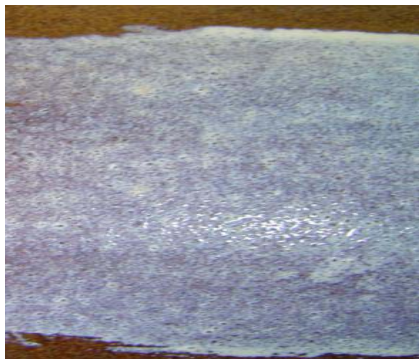
RUST CONVERTER SUPER: RUST CONVERTER - ANTI-RUST AND PRIMER IN ONE

Companies and shipowners spend millions of euros annually on blasting and coating structures, tanks, equipment, platforms and ships in the never-ending fight against corrosion. In the private sector we also have our rust problems with (old) cars and yachts etc.

Not everyone is aware that the product Rust Converter Super can offer considerable benefits in the fight against rust.

Rust Converter Super is a rust converter - a single component product based on tannin and latex - which is applied to rusting steel. After approximately three hours, it forms an excellent substrate for a wide range of topcoats (paints and coatings). Following application by brush, roller or spray it reacts with the iron oxide and a blue/black metallo-organic inert layer is formed.

The rust is neutralised and the treated steel is durability protected against the formation of new rust.



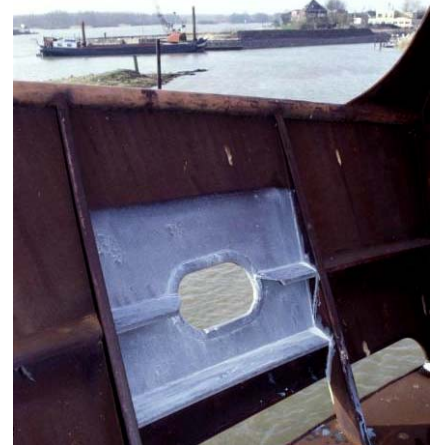
Top: directly after application;
Bottom: a blue/black inert layer has formed

Substantial economic benefits are attainable when large areas of steelwork such as ship decks and hulls or other types of steel structures are being treated. Frequently the steel surface must be abrasive blasted using grit to a standard of SA 2½ before priming and then applying a coating system.

If Rust Converter Super is used, however, 'brush-off' blasting the surface to SA 1 is sufficient. The remaining light rust that is present reacts with the Rust Converter Super applied after brush blasting to form an inert and immediately passive, non-toxic and non-inflammable primer layer. Most types of paint and coating systems can be applied to this layer. These may be paint systems based on alkyd, modified alkyd, chlorinated rubber, epoxy, polyurethane, vinyl or the new water-based paint systems

The financial benefit is thus obtained from a much cheaper blasting grade ('brush-off' blasting instead of SA 2½) and also by not requiring extra primer - this has already formed.

If abrasive blasting is not possible, or is not considered necessary, this product requires minimal pre-treatment such as degreasing, removal of loose rust particles by wire brush or emery paper and washing with plenty of fresh water to remove any soluble salts present. Rust Converter Super can then be applied very economically - even on a steel surface that is still moist.



Since Rust Converter Super is not a paint, the primer layer that forms must be covered by a paint system to provide long-term corrosion protection.

Application by brush, roller or airless spray equipment is easy, with a coverage of approximately 1 litre per 20 m² - that is very economical, also because only one application is sufficient.

In addition to the fact that Rust Converter Super has a proven long-term track record in corrosion protection in both marine and inland shipping industries, this product is also available in small-scale packaging. This makes it ideal for restoration work on old timers, pleasure yachts etc in the private sector.

Author: W. Baris (Director)
Reactions and/or questions: e-mail: tb@vecom.nl